

# SKID STEERS/COMPACT TRACK LOADERS

**L213****L215****L218****L220****L223****L225****L230****C227****C232****C238**

- Industry leading breakout forces and dump height
- Patented Super Boom® technology offers maximum reach at full height
- Comfortable sealed and pressurized cabs
- Superior serviceability for daily checks and routine maintenance





# BUILT AROUND YOU

No matter what your line of work—landscaping, farming or construction—you'll complete your jobs more effectively with New Holland 200 Series skid steers and compact track loaders. The New Holland product development team worked with over 1,000 valued New Holland and competitive skid steer customers for three years to develop final concepts for the 200 Series.

The product development team then used virtual reality technology and New Holland's Arizona proving grounds to test these concepts with prototype units and customer groups of landscapers, farmers, and general contractors.

New Holland listened and designed a loader that met the challenges, answered the requests and fulfilled every wish list. It's the skid steer loader you would want on the job – one that's durable, reliable and productive. New Holland proudly manufactures the 200 Series skid steers and compact track loaders.



## ROCK-SOLID STABILITY

New Holland introduced the long wheelbase concept to skid steers loaders, and now goes longer with the 200 Series. When combined with a low center of gravity and the correct front-to-rear weight distribution, the result is a smooth and stable ride.

## UNMATCHED DUMP HEIGHT AND REACH

The patented New Holland Super Boom® vertical lift linkage offers more height and reach which allows operators to load material into the center of the of high-sided truck boxes or hoppers.

	MODEL	Gross Horsepower		Rated Operating Capacity		Operating Weight		Height to Hinge Pin		DUMP REACH	
		hp (kW)		@ 50% Tipping Weight		lbs (kg)		in (mm)		(Max. Height) in (mm)	
Radial Lift	L213	49	(36)	1,300	(590)	5,070	(2300)	112	(2845)	18.5	(469)
	L215	52	(39)	1,500	(680)	5,300	(2400)	112	(2845)	18.5	(469)
	C227	74	(55)	2,700	(1225)	8,270	(3750)	123	(3124)	22.3	(568)
Super Boom® Vertical Lift	L218	60	(45)	1,800	(818)	5,930	(2690)	120	(3048)	30.8	(783)
	L220	67	(50)	2,000	(905)	6,470	(2930)	121	(3073)	29.8	(758)
	L223	74	(55)	2,250	(1020)	7,400	(3350)	129.4	(3287)	32.3	(821)
	L225	82	(61)	2,500	(1135)	7,900	(3580)	129.4	(3287)	32.3	(821)
	L230	90	(67)	3,000	(1360)	8,300	(3765)	131	(3327)	30.7	(781)
	C232	82	(61)	3,200	(1451)	9,630	(4370)	131.1	(3330)	34.4	(875)
	C238	90	(67)	3,800	(1723)	10,100	(4581)	131.1	(3330)	34.4	(875)

## SUPERIOR OPERATOR COMFORT

New Holland knows that comfort is not simply a luxury: It's vital to your business. Operators who are comfortable can work longer hours with less fatigue. So, we were sure to build in extra comfort when we designed the 200 Series.

- The widest skid steer cab in the industry provides more head room and shoulder room for any size operator. The entry foot well is flat for easy entry and exit.
- The optional heated, cloth upholstered, air-ride seat gives maximum support and eliminates fatigue.
- Our ergonomically designed joysticks put all controls right at your fingertips. And we now have optional controls that are switchable - both ISO & H-Pattern.
- The air vents are strategically located to cover operator extremities as well as defrost the door and windows.
- There's more than twice the visibility as before in the critical zones based on visibility testing\*.



## EASY SERVICING

And when it comes to service, New Holland gets it: service downtime is lost revenue and maintenance is more likely to be done when it is easy to get done.

- By simply opening the engine compartment rear door, you can easily identify service points like the engine oil fill and dipstick, the air filter, oil cooler, radiator, coolant over flow, fuel filter, and oil filter. Battery maintenance is simple, too.
- And, if you need more service access, the flip-top cab opens the machine up wide.



The 200 Series is BUILT AROUND YOU and backed by a strong New Holland dealer network that you can count on!

\*ISO 5006: 2006 specifies a static test method for determining and evaluating the operator's visibility on a rectangular 1 m boundary close around the machine and on a 12 m visibility test circle.



# SUPER BOOM®: THE BEST DUMP HEIGHT, REACH AND

**200**  
SERIES



## A LEGACY OF DUMP HEIGHT, REACH, PRODUCTIVITY AND STABILITY

While the 200 Series skid steers and compact track loaders have been redesigned from the ground up, they honor New Holland's rich history in the skid steer market. They also have kept the core design characteristics that made New Holland skid steer loaders so productive.

## THE HERITAGE OF NEW HOLLAND: HANDLE BIGGER LOADS AND MOVE 'EM FASTER

200 Series loaders provide the best stability and superior visibility, allowing operators to move bigger loads and work with a new level of confidence.

**See how much better a loader can be.**



"I used to think they were all alike. Now I know better. Wait till you try this one."

Choose from six models, from 22 hp. to 62 hp., gas or diesel. All models feature quick-on attachments you can use for a wide range of applications.

**The very first thing** you'll notice about Sperry New Holland skid-steer loaders is the way they look: different. And this is part of what makes them so superior.

Take the patented boom-lift linkage, for instance. What does it accomplish? You'll know as soon as you start up. As the boom rises, it thrusts forward, doesn't arc back toward the operator. Result: extra-long reach so you can dump into places others can't (the center of a big, tandem-axle spreader, for instance).

You'll also notice the operator is positioned securely "inside" the machine when you consider the load. This is why Sperry New Holland loaders are fast becoming known for their stability.

**There's more you'll notice** when you consider the loader's maneuverability. Great maneuverability means you can work in tight service areas. Boom lift means you can reach higher. If you still think all loaders are alike, Sperry New Holland is here to show you how much better a loader can be. Sperry New Holland is a different kind of loader.

SPERRY NEW HOLLAND

National ad appeared in Successful Farming, Machinery Management Issue, February 1980.



# STABILITY... YESTERDAY, TODAY AND TOMORROW

## THE NEW HOLLAND L35 WAS THE FIRST VERTICAL LIFT SKID STEER LOADER IN 1972

The New Holland L35 was introduced in 1972, the first vertical lift skid steer, equipped with the patented Super Boom lift linkage. Since then, over 200,000 New Holland Super Boom skid steer loaders have been sold. Today, the New Holland skid steer is built in Wichita, Kansas and is distributed to over 100 countries in the world. New Holland proudly continues the Super Boom tradition with the 200 Series skid steer loader. As the boom rises, it thrusts forward, and doesn't arc back towards the operator. Result: extra-long height and reach so you can dump into places others can't (the center of a big high-sided truck or tandem-axle spreader, for example). New Holland skid steers provide a seat with a low center of gravity, keeping the operator low and secure in the machine. And when you consider that New Holland offers the longest wheelbase in the industry, you understand why New Holland skid steer loaders are known for their outstanding stability.



ter

change without leaving the cab.

chine, down low. And longer wheelbase, you New Holland loaders for their outstanding

like, too. Hydrostatic erability. Easy-to-reach locks for added safety. ders are alike, see your dealer. He'll show you ader can be. Division of Sperry Corporation.



# SEE HOW MUCH BETTER A LOADER CAN BE

Visibility is very important to operators and New Holland understands. Excellent visibility is delivered with the 200 Series—to the cutting edge, to the bucket at full height, to the sides, and to the rear. You'll complete jobs quickly and efficiently with these loaders.

## EXCELLENT VISIBILITY

- The threshold for the front door on the 200 Series has been lowered, allowing for even better sightlines to the loader bucket and to the trench.
- The see-through area on the cab roof provides a clear view to the bucket at full height.
- The tough side screens on the 200 Series are thinner than the previous 100 Series. The result: more than twice the visibility in critical zones (as defined by ISO 5006).



100 Series cab



200 Series cab

- The rear visibility is improved on the 200 Series with the relocation of the HVAC unit that was mounted at the top of the window. Now, rear visibility is the best in the industry by providing a large rear window, low engine hood and no rear frame towers.



## COMFORTABLE, CLEAN, AND QUIET ENVIRONMENT

- A huge glass door opens wide for easy entry and exit. When closed, it provides superior visibility to all corners and creates an open, uncluttered sense of space.
- A heater/defroster kit and optional air conditioning allows you to control the climate in any weather.
- Full-covering, noise-absorbing trim leads to quiet sound levels in enclosed cabs.
- Fully sealed and pressurized cab minimizes noise, dust and exhaust infiltration.
- Front lights at the side of the cab expand your forward view, especially to the upper corners, making it easier to position loads overhead and maneuver in low-clearance areas.
- Ample leg room and foot room add to operator comfort.
- A demolition door is available in lieu of a glass door for rugged working conditions.

## OTHER STANDARD FEATURES RELATED TO VISIBILITY:

- Dome light
- Top window
- Alarm package (backup & horn)
- Halogen work lights – two in front and two in back – for longer service life and excellent jobsite visibility
- Pre-wiring for rotating beacon, 4 point strobe or rear side lights.
- Taillights
- Warning lights with alarm (engine coolant temperature, engine oil pressure, air cleaner restriction, hydraulic filter restriction, hydraulic oil temperature)
- Indicator lights (engine preheat, parking break, seat belt reminder)







The full-view front windshield provides an outstanding view while the spacious cab provides a comfortable environment for the operator.



# COMFORT IS BUILT IN

Comfortable operators can work longer hours with less fatigue. The New Holland 200 Series breaks new ground with industry-leading dimensions, options, and ease of operation.

- lower threshold
- flat floor
- widest skid steer cab in the industry

## CONTROL LEVER OPTIONS

Mechanical controls are standard. Electro-hydraulic switchable (ISO-H pattern) controls are optional on all models. 200 Series skid steers and compact track loaders built with EH (Electro-Hydraulic) controls feature multiple speed and sensitivity settings on three different circuits: travel, boom and bucket. This allows the customer to personalize the controls depending on their preferences.

Arm rests can be adjusted up or down and EH control mounts have both vertical and horizontal adjustment to fit any operator.



Controls to match your preference



Switches are easily accessible on the control handles to operate such items as the horn, left- and right-side proportional auxiliary, glide ride, turn signals, two-speed, float, or attachment multi-function control.







The step floor is flat for easy entry/exit and more foot and leg room.



## CAB COMFORT

It's easy to enter and exit the 200 Series loaders because the threshold is low, the step area by the foot pedals is flat, and grab handles are positioned for convenient use when getting in and out.

All 200 Series loaders come standard with a retractable seatbelt (a shoulder belt is standard with enclosed cabs). All models have optional suspension seats or an air-ride cloth suspension seat for the ultimate in comfort.

All the switches and gauges are right in front of you and easy to access from the comfort of your operator seat.

Even more options to customize the operator's environment and increase productivity:

- Enclosed cab with heat and air conditioning
- Hydraulic coupler
- Block heater
- Turn signals
- Self leveling
- Glide Ride
- High-flow hydraulics
- Enhanced high-flow hydraulics
- Radio with speakers
- Easy-to-remove and clean side windows (no tools required)



# HARD WORK AND DEMANDING CONDITIONS? BRING IT

Super Boom skid steers and compact track loaders are reliable workhorses that stand up to any challenge you face. New 200 Series is built around you with reliable engines that deliver powerful performance, yet use less fuel and are easy to maintain to decrease your operating costs.



## FPT™ F5 ENGINES (L223, L225, L230, C227, C232, C238)

### HIGH PERFORMANCE IN ALL CONDITIONS

These engines stand out for their low-cost operation, extremely easy maintenance and excellent performance in the most demanding applications.

- These turbocharged engines feature externally cooled EGR (exhaust gas recirculation) for efficient air handling and high engine power density with the shortest load response time.
- A state-of-the-art direct fuel injection system uses a simple, proven, mechanical, rotary pump that provides accurate fuel delivery.
- Operators will notice a minimum of noise and vibration due to the design of the engine, including camshaft in crankcase, suspended oil pan, and balancer counterweights incorporated in crankshaft webs.
- Highly integrated engine components mean superior leakage prevention. Examples include the integrated Closed Crankcase Ventilation (CCV) system and the water-oil cooler, oil and water pumps with by-pass, which are all fully integrated in the block.
- Optimized engine structure, including precise mechanical clearances, piston rings oil system calculations, and a long, 500-hour oil change interval reduces maintenance needs and operating costs.





# ON!



## ISM ENGINES (L213, L215, L218, L220)

### CLEAN, COMPACT, QUIET AND EASY TO SERVICE

- The combustion chamber and injection system use fuel efficiently and deliver outstanding power rise and torque.
- Low emissions and an energy-saving design make these engines as friendly to the environment as they are to your budget.
- The rigid cylinder block, small bore dimension and multiple cylinders lead to low noise and vibration—from idling up to maximum power—for added comfort and ease for operators.
- The compact, well-balanced engine is strong and durable. Its multi-level design also allows for simple parts interchangeability.
- One-sided daily maintenance layout allows for quick servicing activities.
- 500-hour service intervals (250 hours for L213/L215) decrease your operating costs, and maintenance downtime.

### ALL WEATHER PERFORMANCE

- Standard glow plugs.
- Standard easy-access, maintenance-free battery with up to 1,000 cold cranking amps.
- Reliable starter for easy starts
- Heavy-duty top and bottom oil cooler/radiator configuration for high cooling capacity under the most extreme conditions. Rigid mount reduces vibration and easy tilt-out for simple cleaning.



Optional high-flow hydraulics are available on the L218, L220, L223, L225, L230, C227, C232, C238.

### RESPONSIVE HYDRAULICS

- Fast cycle times.
- In-line hydraulic pumps produce less noise and provide extra-smooth, quiet operation.
- Optional high-flow hydraulics (on the L218 through L223 & all CTLs) allow you to run attachments hour after hour.
- Enhanced high-flow hydraulics are available on the L230 and C238.
- The SAHR (Spring Applied Hydraulic Release) parking brake can be released or applied by the press of a button and is automatically applied when machine is shut off.

### EXTRA PERFORMANCE

- The dual-range transmission can provide travel speeds in excess of 11 mph (8 mph on CTLs) to save time on and between job sites. It is standard on the L220, L225, L230 and all CTLs



# EASY ACCESS SERVICEABILITY



On all vertical lift models, the operator is able to engage the boom lock from inside the cab for added safety when exiting the machine with the boom up. Always use caution when entering or exiting the cab, and always use boom locks when entering or exiting the cab with the bucket raised.



Single-side battery maintenance layout allows for quick service and fast maintenance activities.



New Holland “gets it”: If service access is not easy, it won’t get done. New Holland groups daily service points for easy access. And all major service points can easily be reached by flipping the cab forward.

## SERVICE MADE EASY

- The rear door and hood provide easy service access for periodic maintenance and daily checkpoints (engine oil, fuel fill, hydraulic oil, coolant and radiator points may be accessed without tools).
- The radiator can be cleaned from both sides.

## SERVICE INTERVALS

- Every 500 hours (L218, L220, L223, L225, L230, C227, C232, C238); 250 hours (L213, L1215) – change engine oil and filter
- Every 500 hours – change primary fuel filters and hydraulic oil filters
- Every 1,000 hours – radiator drain and flush
- Spend more time on the job and less time in the shop for routine maintenance.

## BUILT TO LAST

- New Holland combined elements from the previous Super Boom loader design with proven technology from larger New Holland loaders to develop a new, superior boom design for the 200 Series.

## OPERATOR FEATURES

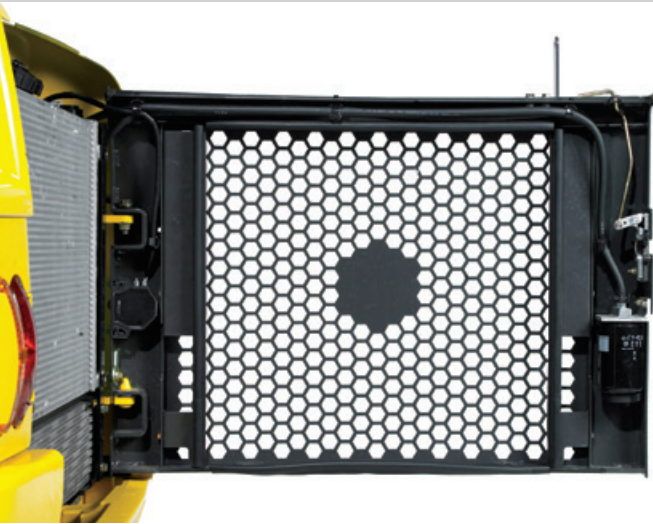
- Unique dual boom lock struts, when engaged, keep the boom in the raised position (vertical lift models).
- Operators engage and disengage the boom lock without leaving the cab (vertical lift models).

## UNMATCHED ACCESS

If ever needed, the entire cab and boom lift assembly can be tilted forward to provide unrivaled access to components.







The swing-out, rear-access panel provides quick and easy access to check engine oil, hydraulic oil, radiator coolant and fuel fill.



**New Holland Construction Equipment is backed with a Limited Warranty for 1-Year/Unlimited Hours. See the Warranty and Limitation of Liability for warranty details and terms.**





# MULTI-TASK MASTER

New Holland skid steers and compact track loaders do a lot more than lift and load. Take a look at the wide array of attachments and you'll quickly see how the versatility of these machines can make you more productive. These are just some of the available attachments:

- 4 X 1 Bucket
- Angle Broom
- Augers
- Auto Rake
- Backhoes
- Bale Handler
- Bale Spear
- Brush Grapple
- Chipper
- Cold Planer
- Concrete Bucket
- Concrete Claw
- Dozer Blade
- Harley Power Box Rake
- Hopper Broom
- Log Grapple
- Manure Forks
- Manure Scraper
- Pallet Forks
- Pick-Up Broom
- Post Driver
- Post Puller
- Power Side-Discharge Bucket
- Preparator Landscape Rake
- Rock Bucket
- Root Rake
- Rotary Cutter
- Scrap Grapple
- Silage Defacer
- Silt Fence Installer
- Skid Hoe
- Snow Blade
- Snow Bucket
- Snow Blower
- Snow Pusher
- Steel Tracks
- Stump Grinder
- Tiller
- Tree Shovel
- Tree Spade
- Trencher
- Vibratory Roller



## EASY ATTACHMENT CHANGES

Whatever you need to do—dig, lift, hammer, trench, plane, mow, sweep, rake or drill—there is a New Holland attachment that will get your work done.



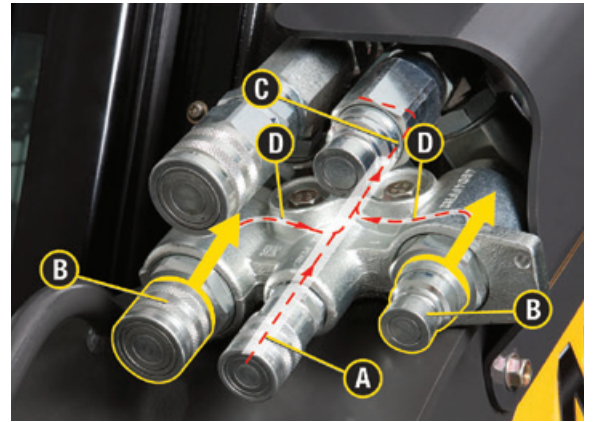


## AUXILIARY PRESSURE RELEASE

A connect under pressure (CUP) hydraulic manifold is standard equipment on all models and allows for easy hook-up of all hydraulic attachments. By pushing on the fitting, you release pressure in both the machine and attachment lines. Lines can now be relieved without wrenches.

- A.** Hydraulic oil return (case drain)
- B.** Hydraulic oil supply. These fittings slide into manifold and when pressed in, any pressure within the manifold is directed to the hydraulic oil reservoir.
- C.** Drain line that flows to the tank
- D.** Pressure vents

Optional High Flow Auxiliaries shown below.



## HYDRAULIC COUPLER OPTION

An optional hydraulic attachment coupler increases uptime and productivity on the jobsite by allowing operators to exchange attachments quickly and safely.

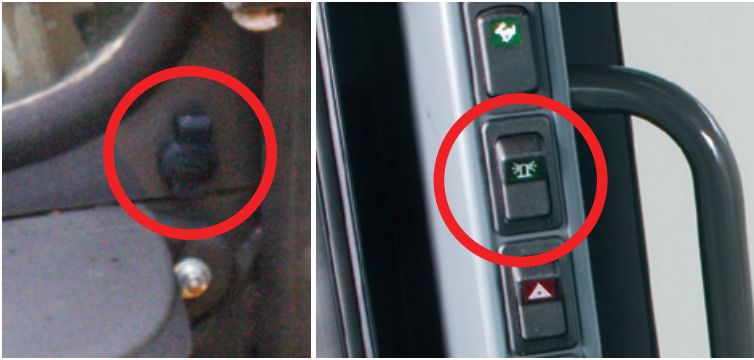




# DEALER INSTALLED ACCESSORIES

## PLUG AND PLAY

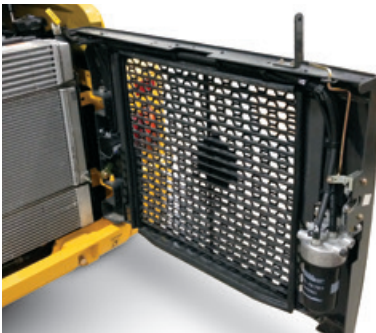
All New Holland 200 Series machines are pre-wired to accept any electrical accessory. The weather-proof plug is conveniently located on the back of the cab and there is a separate switch already installed inside on the left post.



DRAWBAR



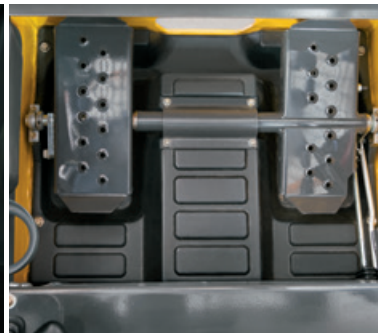
ATTACHMENT HOSE GUIDE



REAR DOOR INSERT



INTERIOR MIRROR KIT



FOOT CONTROLS



BEACON



SINGLE-POINT LIFT



COUNTER WEIGHT KIT



FOPS LEVEL 2



CYLINDER GUARDS





## EXTRAS AND UPGRADES

New Holland offers a variety of important accessories that can be installed easily on either new or used equipment. These can help upgrade an existing unit or customize one for a particular job. New Holland has kits for the 200 Series, but can also provide kits to upgrade previous models whether you are looking to add a weight kit, or enclose a cab and add air-conditioning.

If your upgrade is more than you are comfortable with, your local New Holland dealer will be happy to install any of our kits.



FOUR-POINT LIFT (FRONT)



REAR LIGHT KIT



FOUR-CORNER LED STROBE



FOUR-POINT LIFT (REAR)



FRONT DEMO DOOR



ROAD LIGHT KIT (REAR)



ROAD LIGHT KIT (FRONT)



HIGH BEAM LIGHT KIT



# UNDERCARRIAGE & TRACK BELTS

## DOZER-STYLE UNDERCARRIAGE

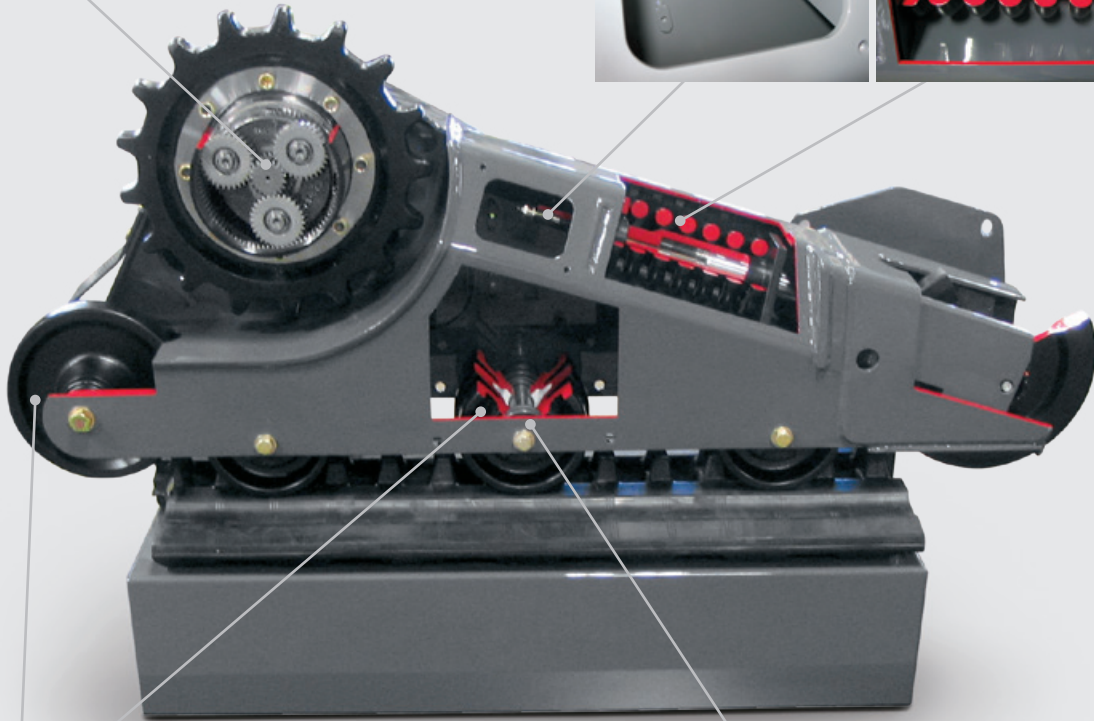
New Holland 200 Series compact track loaders feature a dozer-style undercarriage, engineered to hold fast on steep slopes and take command of muddy or sandy terrain. The undercarriage has a rigid-track frame with fewer moving parts for greater durability and easier maintenance than suspension-track systems.

### HEAVY DUTY DRIVE MOTOR /FINAL DRIVE

Increases component life by using an oversized bearing in line with the drive sprocket and elevating the drive assembly, keeping it out of material

### SIMPLE HYDRAULIC TRACK ADJUSTMENT

Track tension is simply adjusted by adding or removing grease to a hydraulic cylinder. Track tension is important to undercarriage life and track life.



### LIFETIME SEALED AND OIL LUBRICATED ROLLERS & IDLERS

Duo-cone face seals utilize proven dozer oil-lubrication technology that provides greater reliability and lower maintenance costs. The seals reduce the possibility of material and moisture getting into the rollers and idlers.



### TRIPLE FLANGE ROLLERS

Helps prevent de-tracking on inclines by using dozerstyle rollers with a larger inner-diameter flange positioned between the track lugs.



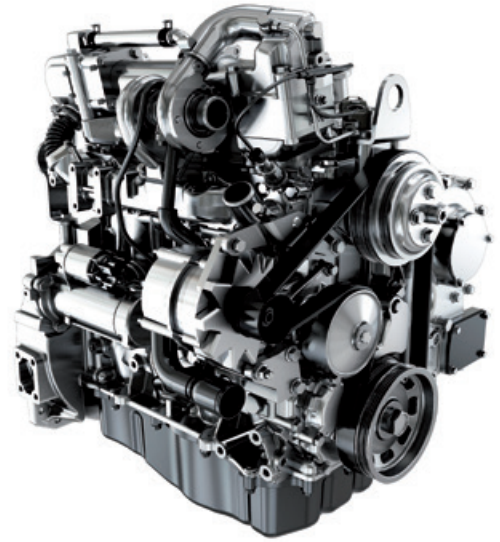
# LOWER EMISSIONS, LESS FUEL

## CLEAN ENERGY

New Holland 200 Series skid steers and compact track loaders comply with the extremely strict Tier 4 interim regulations, dramatically cutting emissions levels, with over 90% less particulate matter (PM), or soot, and 50% less nitrogen oxide (NOx) than the previous generation.

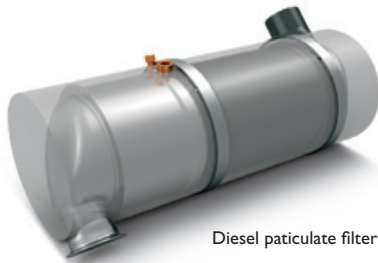
## FUEL SAVINGS

The new Tier 4I engines provide the same power and torque as previous engines, without increasing RPM, providing fuel savings of at least 4%. In addition, when you don't use the full power of the machine, the variable flow hydraulic pump only uses the power required leading to significant extra-fuel savings and as well as reduced operating noise.



## TIER 4 INTERIM EMISSIONS SOLUTION

Tier 4 interim standards are in place now, with Tier 4 Final standards beginning in 2014. New Holland not only meets these requirements to do what's right for you and the environment, but also achieves them in a way that meets your needs for productivity, fuel efficiency and uptime. Tier 4 standards require the reduction of the main pollutants in emissions: carbon monoxide, hydrocarbons, nitrogen oxides, and particulate matter. Emissions limits are particularly focused on curbing airborne NOx and PM.



Diesel particulate filter

## HOW CEGR WITH A DIESEL PARTICULATE FILTER WORKS

Similar to Tier 3 technologies, New Holland's Tier 4I solution uses cooled exhaust gas recirculation (CEGR). When exhaust gases are recirculated, NOx levels go down due to the lower engine operating temperatures, but PM levels increase. The diesel particulate filter manages those increased PM levels by first collecting them in the filter, then burning them off during filter regeneration that occurs periodically during normal operation or when initiated by the operator. These regenerations do not limit engine performance. PM is burned off by introducing diesel fuel through an oxidation catalyst that creates heat.





## 200 SERIES LOADERS

### L213

Horsepower  
Gross 49 hp (36 kW)

Rated operating capacity  
1,300 lbs (590 kg)

### L215

Horsepower  
Gross 52 hp (39 kW)

Rated operating capacity  
1,500 lbs (680 kg)

### L218

Horsepower  
Gross 60 hp (45 kW)

Rated operating capacity  
1,800 lbs (818 kg)

### L220

Horsepower  
Gross 67 hp (50 kW)

Rated operating capacity  
2,000 lbs (905 kg)

### L223

Horsepower  
Gross 74 hp (55 kW)

Rated operating capacity  
2,250 lbs (1020 kg)

### L225

Horsepower  
Gross 82 hp (61 kW)

Rated operating capacity  
2,500 lbs (1135 kg)

### L230

Horsepower  
Gross 90 hp (67 kW)

Rated operating capacity  
3,000 lbs (1360 kg)

### C227

Horsepower  
Gross 74 hp (55 kW)

Rated operating capacity  
2,700 lbs (1225 kg)

### C232

Horsepower  
Gross 82 hp (61 kW)

Rated operating capacity  
3,200 lbs (1451 kg)

### C238

Horsepower  
Gross 90 hp (67 kW)

Rated operating capacity  
3,800 lbs (1723 kg)

## World Class Products Demand World Class Dealers

The purchase of a New Holland machine is just the beginning of our relationship together. Consider your experienced New Holland Construction equipment dealer as your local partner in productivity. Assistance in selecting the right model for your operation and developing an affordable leasing or financing plan through New Holland's financing division, CNH Capital, are just a few advantages your local dealer can provide.

Your New Holland dealer's full service capabilities bring you responsive support with genuine New Holland parts and all makes coverage. More importantly, we are there wherever and whenever you need us with our fully equipped service vehicles. From customized maintenance programs to professional operator and technical training, our factory-trained service and parts experts are there to assist you with any of your equipment support needs.

Your business deserves nothing less than world class product, supported by a world class business partner. That's your New Holland Construction Equipment dealer — your partner in productivity.



New Holland Construction  
500 Diller Ave.  
New Holland, PA 17557

New Holland Construction Equipment is backed with a Limited Warranty for 1-Year/Unlimited Hours. See the Warranty and Limitation of Liability for warranty details and terms.

Design, materials and/or specifications are subject to change without notice and without liability therefor. Specifications are applicable to units sold in Canada, the United States, its territories and possessions, and may vary outside these areas.

© 2013 CNH America LLC. All rights reserved. New Holland is a trademark of CNH America LLC. Any trademarks referred to herein, in association with goods and/or services of companies other than CNH America LLC, are the property of those respective companies.



Safety begins with a thorough understanding of the equipment. Always make sure you and your operators read the Operator's Manual before using the equipment. Pay close attention to all safety and operating decals and never operate machinery without all shields, protective devices and structures in place. This is a one-person machine. Never allow riders in the cab, outside the machine, or in/on any bucket or attachment.

NHC201307SSLCTL • 031415 • SG • PRINTED IN U.S.A.

 Printed on recycled paper